



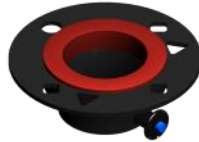
Qty: (2) Bag - Pole - Black
P/N: BSM2-B-P400-BAG-BLK
1.1 lbs / .5 kg



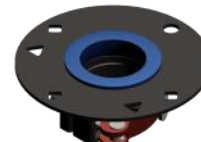
Qty: (1) Pole - Base - AL2 - Blue Insert
P/N: BSM2-P-M201-AL2-00B
3.3 lbs / 1.5 kg (each)



Qty: (14) Pole - Center Mast - AL2
P/N: BSM2-P-M101-AL2-000
3.3 lbs / 1.5 kg (each)



Qty: (1) Primary Guy Ring
P/N: BSM2-A-M100-RNG-PN0
0.6 lbs / 0.3 kg



Qty: (1) Secondary Guy Ring
P/N: BSM2-A-M100-RNG-CM1
1.0 lbs / 0.5 kg



Qty: (4) 15M - Guy Rope - Primary
P/N: BSMU-P-G615-PRI-RED
0.6 lbs / 0.3 kg (each)



Qty: (4) 15M - Guy Rope - Secondary
P/N: BSMU-P-G615-ZND-BLU
0.6 lbs / 0.3 kg (each)



Qty: (1) Bag - Small Accessory - Black
P/N: BSM2-B-P610-BAG-BLK
1.0 lbs / 0.5 kg



Qty: (1) Hammer - 3 lbs.
P/N: BSM2-V-P350-HMR-000
3.4 lbs / 1.5 kg



Qty: (1) Tripod with Bolted Lift Winch
P/N: BSM2-K-T200-LFT-000
34.0 lbs / 15.4 kg



Qty: (1) Pole - AL2 - Mounting 18 Inch
P/N: BSM2-A-M118-00P-AL2
1.3 lbs / 0.6 kg



Qty: (1) Base Plate - Lift Kit
P/N: BSM2-P-T705-BSP-000
1.6 lbs / 0.7 kg



Qty: (8) Stake - Zinc Plated - Tripod
P/N: BSM2-P-S800-STA-000
0.9 / 0.4 kg (each)



Qty: (2) Tool - Stake Extractor
P/N: BSM2-P-S801-PUL-000
0.7 / 0.3 kg (each)



Qty: (8) Stake - Galvanized - Guying
P/N: BSM2-P-G700-STA-000
0.9 lbs / 0.4 kg (each)



Qty: (1) Reference Pack - Lift
P/N: BSM2-L-M503-PAC-000
0.7 lbs / 0.3 kg



Qty: (1) Winch - Handle
P/N: BSM2-P-W500-HDL-010
0.6 lbs / 0.3 kg



Qty: (1) Wheeling Carry Bag
54 x 14 x 14 Inches
P/N: BSM2-B-P305-BAG-3WH
23.7 lbs / 10.8 kg



NSN:
5985-01-633-2877

WEIGHT	140.2 lbs / 63.6 kg
WIND RATING	70.0 mph / 112.7 km/h
MAX LOAD	20.0 lbs / 9.1 kg
BlueSky Mast, Inc. 2080 Wild Acres Rd Largo, FL 33771 www.blueskymast.com sales@blueskymast.com	
Phone: 877-411-6278 CAGE: 3JWX5	

BLUESKY MAST
elevating solutionsSM

TITLE	
AL2 - LIFT SERIES - 15 METERS (46.5 FT)	
PART NUMBER	REV
BSM2-W-L215-AL2-000	F

(c) Copyright 2019 Allendale, LLC All Rights Reserved.
This specification is subject to change without notice.
DRAWING SCALE NONE. DIMENSIONS IN INCHES.